

NSF CAREER

Introductory Information Session

2.5.2021

BreeAnn Brandhagen | Kristina Quynn

Research Acceleration Office | *CSU Writes*



RESEARCH
COLORADO STATE UNIVERSITY

NSF CAREER Overview

- NSF's most prestigious award - early career faculty
- Junior faculty who exemplify teacher-scholars
- Program Goals:
 - Provide support for five years around an individual PI's career
 - Aims to lay a foundation for integrated contributions to research and education
 - Increase participation of those underrepresented in science/engineering

NSF CAREER Program Details

- Budget:
 - \$400k minimum (BIO, ENG, OPP: \$500k minimum) over 5 years (*including indirect costs*)
 - Discuss funding levels with your PO
 - Other allowable NSF costs: student/postdocs; PI salary; education/outreach activities; evaluators; travel; consultants; etc.
- **No Co-PIs**
 - Senior Personnel/Collaborators/Subawards are allowed in a limited role
- Award Decisions: Late 2021/Early 2022
- May only submit 3 times

Eligibility

Proposers must meet all of the following eligibility requirements at the time of submission:

- Hold a doctoral degree in a field supported by NSF;
- Be engaged in research in an area of science, engineering, or education supported by NSF;
- Hold at least a 50% tenure-track (or tenure-track-equivalent) position as an assistant professor (or equivalent title);
- Be untenured; and
- Have not previously received a CAREER award. (*Prior or concurrent Federal support for other types of awards for non-duplicative research does not preclude eligibility.*)

Eligibility

Tenure-Track Equivalency - For a position to be considered a tenure-track-equivalent position, it must meet all of the following requirements:

- (1) the employee has a continuing appointment that is expected to last the five years of a CAREER grant;
- (2) the appointment has substantial research *and* educational responsibilities; and
- (3) the proposed project relates to the employee's career goals and job responsibilities as well as to the mission of the department or organization.

As stated in the Proposal Preparation Instructions, for non-tenure-track faculty, the Departmental Letter must affirm that the investigator's appointment is at an early-career level equivalent to pre-tenure status, and the Departmental Letter must clearly and convincingly demonstrate how the faculty member's appointment satisfies all the above requirements of tenure-track equivalency.

Faculty members who are Associate Professors or in equivalent appointments, with or without tenure, are not eligible for the CAREER program. Faculty members who hold Adjunct Faculty or equivalent appointments are not eligible for the CAREER program.

NSF CAREER Assessing Directorate Fit

- Contact your PO:
 - <https://www.nsf.gov/crssprgm/career/contacts.jsp>
- Review past awards in your division/program:
 - Program Page: https://www.nsf.gov/funding/pgm_summ.jsp?pims_id=503214
 - Click on “What has been funded” – then can select state/directorate/division/etc.
- For Interdisciplinary proposals, contact POs for all possible Directorates

NSF CAREER Deadline

- Biological Sciences
- Computer & Information Sci & Eng.
- Education & Human Resources
- Engineering
- Geosciences
- Mathematical & Physical Sci
- Social, Behavioral & Economic Sci
- Office of Integrative Activities
- Office of International Science & Engineering

**ALL APPLICATIONS Due
July 26, 2021 by 5pm
submitter local time**

NSF CAREER -- Research Plan

- Strike balance between traditional and risky research
- *Remember:* These 5 years will build the foundation for your entire career
- From NSF:
 - What do you intend to do that others want/need to know?
 - Why is the work important, innovative and exciting?
 - What has already been done and how will your work build on it?
 - How are you going to do the work to answer the question uniquely?
 - What makes you the best person to do this work?

NSF CAREER -- Education Plan

- Include proposed educational activities and evaluation of their impact
 - Directed at K-12, UG, G, and/or the general public
 - Should address the needs and interests of CSU and your discipline
 - Leveraging existing programs/resources is encouraged
- Go beyond standard activities
- Read and cite relevant educational literature
- Include funding for education and evaluation in budget

BROADER IMPACTS SESSION -- MARCH 26 @ 12:30-2PM

NSF CAREER -- Proposal Components

- Project Summary (1 page)
- Project Description (15 pages)
 - Research Plan
 - Education Plan
 - Integration Plan (plus evaluation)
 - Results from prior NSF awards
 - References
- Biosketch for PI (cover BOTH research and education activities)**
- Department Head Letter (2 pages)
- Letters of Collaboration
 - Single sentence format
- Budget
- Budget Justification (5 pages max.)
- Current and Pending**
- Facilities and Equipment
- Post Doc Mentoring Plan
- Data Management Plan
- Collaborators/Other Affiliations list

*****new NSF requirements on formatting
New PAPPG guidelines (NSF 20-1) effective June 1, 2020***

Review Process

Mix of Ad Hoc and Panel reviews, by directorate

- Ask your PO for details
- **Ad hoc:** Proposals sent out for review to SMEs; asked to review one (or a very few) proposals; does not attend panel. Ad hoc reviewer ratings are provided to the panel, if applicable
- **Panel:** panel members have broader set of expertise; ~2-4 panelists will review your proposal before the session; face-to-face session involves discussion of proposals' merits and ranking

Review Elements

Make these EASY for reviewers to find in your narrative!

1. What is the potential to:
 - a. advance knowledge and understanding within its own field or across different fields
(Intellectual Merit)
 - b. benefit society or advance desired societal outcomes (**Broader Impacts**)
2. To what extent do the proposed activities suggest and explore creative, original, or potentially transformative concepts?
3. Is the plan for carrying out the proposed activities well-reasoned, well organized, and based on a sound rationale? Does the plan incorporate a mechanism to assess success?
4. How well qualified is the individual, team, or institution to conduct the proposed activities?
5. Are there adequate resources available to the PI (either at the home institution or through collaborations) to carry out the proposed activities?

NSF CAREER General Advice

- Proposal Summary: A stand alone, compelling document
- Department Head letter is critical – talk to department head early
- Science AND education must be innovative and well-integrated
- Compatible with your institution's priorities/goals
- Research Objective(s): Demonstrate alignment with NSF mission of supporting fundamental scientific research
 - Avoid: “develop”, “optimize”, “design of”
 - Use hypothesis-driven wording

NSF CAREER General Advice

- Directorate/Division CAREER priorities differ – Talk to your anticipated program director. Have a 1 page summary of your ideas ready
- Consider timing of your application (you may not submit in more than 3 competitions)
- Plan to reapply; use reviews to improve your application each time
- Start early, take advantage of resources

REMEMBER: Proposal must be submitted to OSP 5 business days prior to NSF Deadline

NSF CAREER CSU Support

- Website with posted informational resources and contacts:
<https://www.research.colostate.edu/rao/early-career/nsf-career-support-program/>
- FAQ posted on website
- Resubmission? Review debriefs are available – contact RAO
- **Panel session with past NSF POs and past CAREER recipients – Mar 5**
- **Education Plan/Broader Impacts Panel and “Speed Dating” – Mar 26**
- **CSU Writes Writing Groups, Editing Groups, and Writing Retreats**
- Review of proposal drafts (**Drafts Due June 3**)

Month	NSF CAREER Programming
February	<ul style="list-style-type: none"> • NSF CAREER Introductory Information Session February 5th @ 1-2pm <ul style="list-style-type: none"> ○ 1-hour session including an introduction to the NSF CAREER opportunity, CSU's CAREER programming, and CSU <i>Writes</i>. Opportunity for open Q&A at the end. ○ Register using the Intro Session Form • 1 or 2-Day FACULTY/RESEARCHER Writing Retreat, February 12-13 • 1-Day GRANT Writing Retreat February 20 <ul style="list-style-type: none"> ○ Breakout sessions specific to NSF CAREER on Feb 20 ○ Register at https://csuwrites.colostate.edu/faculty-retreats/ • 1 on 1 Review Debriefs <ul style="list-style-type: none"> ○ Arranged individually; available for past applicants who are considering resubmission
March	<ul style="list-style-type: none"> • NSF CAREER Strategy Session March 5th @ 1-2pm <ul style="list-style-type: none"> ○ 1-hour panel session with past NSF CAREER Recipients and NSF Program Officers about tips, advice, experiences; followed by open Q&A. ○ Register using the Strategy Session Form • NSF CAREER Educational Plan and Broader Impacts Panel March 26th @ 12:30-2pm <ul style="list-style-type: none"> ○ 1.5-hour session; Panel consisting of: 1) past CAREER recipients to provide an example of funded education plans; 2) short intros/info from resources across campus ○ Register using the Broader Impacts Session Form • 1 or 2-Day FACULTY/RESEARCHER Writing Retreat, March 19-20 <ul style="list-style-type: none"> ○ Register at https://csuwrites.colostate.edu/faculty-retreats/

April	<ul style="list-style-type: none"> • 1 Day GRANT Writing Retreat, April 3 <ul style="list-style-type: none"> ○ Breakout sessions specific to NSF CAREER on April 3 ○ Register at https://csuwrites.colostate.edu/faculty-retreats/
May	<ul style="list-style-type: none"> • CSU <i>Writes</i> FACULTY/RESEARCHER Week-Long Summer Retreat: May 24-28 <ul style="list-style-type: none"> ○ Register at https://csuwrites.colostate.edu/faculty-retreats/
June	<ul style="list-style-type: none"> • CAREER Draft Internal Review <ul style="list-style-type: none"> ○ Proposal drafts received by June 3, 2021 ○ Reviews completed by June 18, 2021
July	<ul style="list-style-type: none"> • CAREER Deadline (July 26, 2021)



CSU WRITES
COLORADO STATE UNIVERSITY

3 streams: Faculty, Postdoc, Grad Student

Research writing focus

Writing practices for academics and
researchers

Funded by Graduate School & OVPR



CSU Writes addresses the 5 primary areas researchers and scholarly writers struggle most:

- SPACE
- TIME
- ENERGY/MOMENTUM
- STYLE
- COLLABORATION

Supports career-building and career-sustaining writing practices among academic professionals who write for publication, submission and/or degree completion.



Research on Academic Writing Productivity & Writing in Social Spaces



Joli Jensen

Prof. of Communications,
Director of the Henneke
Faculty Writing Program
University of Tulsa



Rowena Murray

Prof. of Education, Director
of Research, School of Ed.
U of the West of Scotland



Robert Boice

Retired Prof. of
Psychology
State University of New
York, Stony Brook

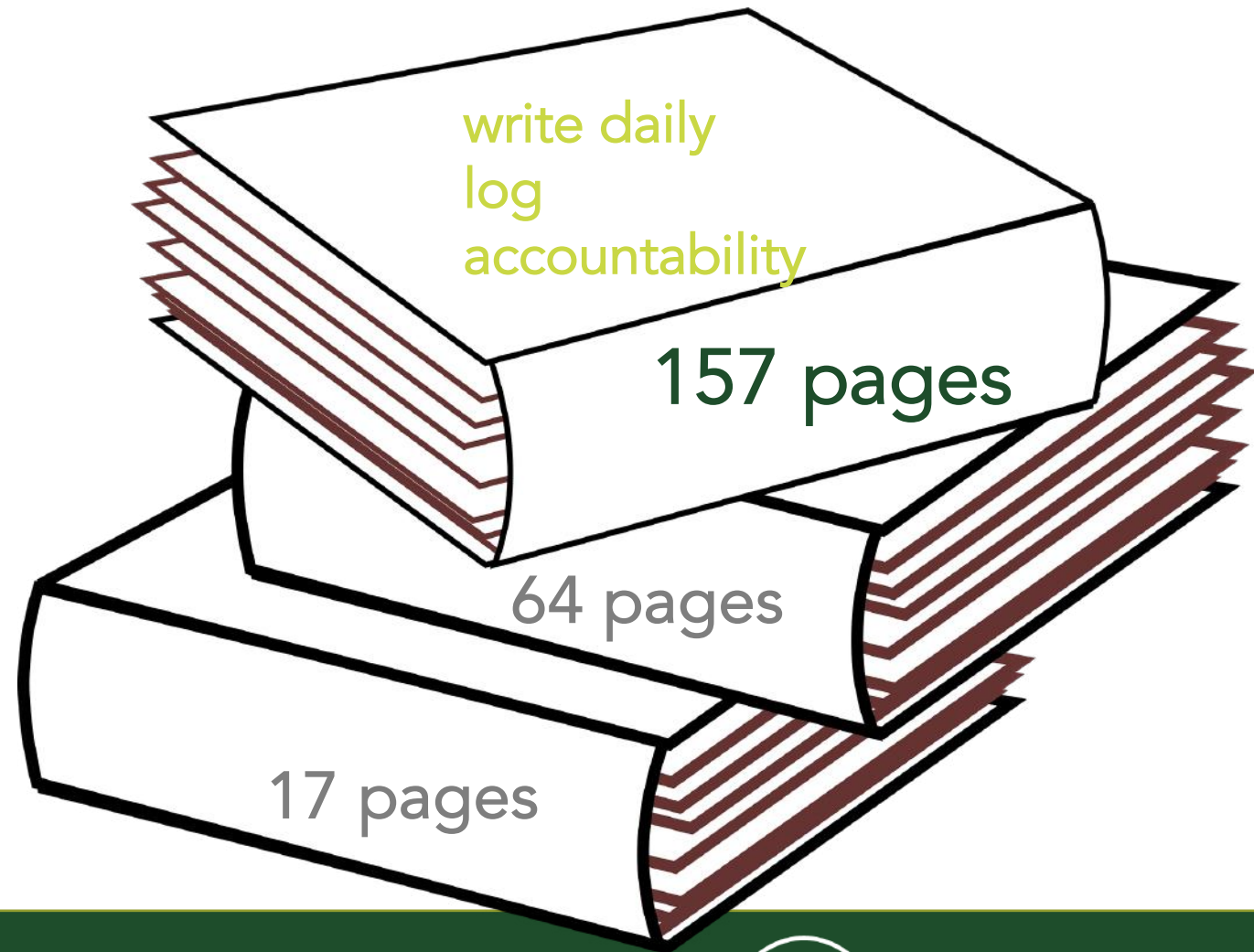


Boice & Academic Writing Productivity

1 YEAR

3 GROUPINGS of FACULTY WRITERS

- A. No change
- B. Write Daily & Log
- C. Write Daily, Log, Held Accountable



CSU Writes' Career-Building, Career-Sustaining Approach

3 keys to writing productivity:

Schedule

Log

Accountability

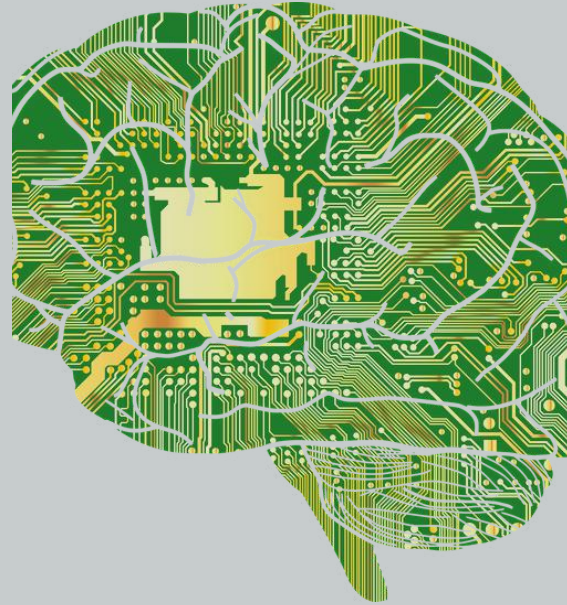
Resources for NSF--CAREER

- show up & write.
- writing/editing groups
- writing retreat(s)
- faculty
- productivity/accountability packages



GRANT WRITES

SPRING-SUMMER 2021



GRANT WRITING SUITE

PROPOSAL WRITING AND PRODUCTIVITY SUPPORT FOR GRANT WRITERS

FEBRUARY - JUNE 2021

For more information, email CSU Writes: csuwrites@colostate.edu

Dr. Kristina Quynn, CSU Writes
BreeAnn Brandhagan, RAO, OVPR



COLORADO STATE UNIVERSITY | CSU WRITES

Faculty Writes ▾ Doc Writes ▾ Grad Writes ▾ SUITES & SPECIAL EVENTS ▲ show up & write. Accolades Resources ▾

CSU Writes is a writing facility designed for professional researchers and academic writers who are interested in boosting their productivity and developing a sustainable writing practice.

While select offerings are open to all writers on campus, CSU Writes primarily serves faculty, postdoctoral fellows, and graduate students who write for publication, submission, and/or degree completion.

[More About CSU Writes](#)

- Mentoring GRAD Writers
- GRANT Writes Suite
- GROC: Graduate Students & Researchers of Color
- Write to Publish
- NREL Suite
- Teaching Philosophy Suite
- Guest Speakers & Panels

 FACULTY Writes

 DOC Writes



CSU WRITES
COLORADO STATE UNIVERSITY



CSU WRITES
COLORADO STATE UNIVERSITY

FACULTY WRITES

SPRING 2021 EVENTS
(held remotely, join from anywhere)

WORKSHOPS

JAN 26, 1-1:50. Schedule & Prioritize Your Writing
FEB 11, 12-12:50 AGILE Project Mgt for Writing
MAR 11, 12-12:50 Write Concisly w/ *The Writer's Diet*
APR 21, 12-12:50 Working w/ Grad Student Writers

RETREATS

FEB 12 & 13 Writing Retreat (5.5 hrs writing/day)
FEB 20 Grant Writers
MAR 19 & 20 Writing Retreat
APR 3 Grant Writers
APR 23 & 24 Writing Retreat
MAY 24-28 Week-Long Retreat

SUITES & MORE

FACULTY MANUSCRIPT SUITE
[show up & write](#). M-F 8am-5pm
GRANT WRITES (w/ NSF no-deadline & NSF-Career options)
NIH Writes
NRELWrites

**MORE INFO &
REGISTER HERE**

Contact: csuwrites@colostate.edu
Director, Dr. Kristina Quynn



Colorado State University



CSU Writes is a writing facilitation program designed for professional researchers and academic writers who are interested in boosting their productivity as they develop a sustainable writing practice. CSU Writes is funded by Office of the Vice President for Research and the Graduate School.

Upcoming Faculty Retreats

- All-Faculty FEB 12/13
- Grant Writers FEB 20
**with special - NSF CAREER breakout sessions
- All-Faculty MAR 19/20
- Grant Writers APR 3
- **with special NSF CAREER breakout sessions
- All-Faculty Intensive APR 23/24
- May 4-Day Retreat May 24-28
- Women Writers June TBA



CSU WRITES

COLORADO STATE UNIVERSITY

Thank you



Colorado State University