



LAR BULLETIN

“The Bull”

MARCH 2016

ISSUE 67

LAR CONTACTS:

Lon Kendall, Director
Lon.kendall@colostate.edu
(970) 491-5903;

Jessica Ayers, Associate Director
Jessica.ayers@colostate.edu
(970) 491-5238

James Owiny, UV
James.owiny@colostate.edu
(970) 491-5668

Steve Cary, Research Specialist
steve.cary@colostate.edu
(970) 219-9892

Ken Hines, Coordinator
ken.hines@colostate.edu
(970) 980-9217

Michelle Adams, Supervisor
Foothills,
michelle.adams@colostate.edu
(970) 218-5295

Elisa French, Technical Services,
elisa.french@colostate.edu
(970) 491-1048

Sheryl Carter, Animal Care
Supervisor,
sheryl.carter@colostate.edu
(970) 491-6571

Denise Ostmeyer, Trainer,
denise.ostmeyer@colostate.edu
(970) 491-7184

Diana Collins, Business Office,
diana.collins@colostate.edu
(970) 491-1766

Monica Stultz, Animal Ordering,
monica.stultz@colostate.edu
(970) 491-0896

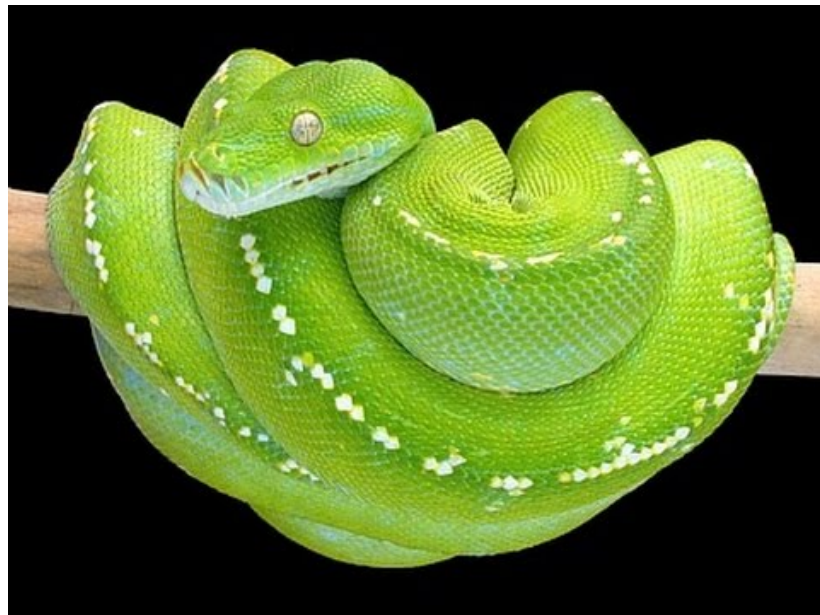
Jessica Dollard, Front Reception,
Jessica.dollard@colostate.edu
(970) 491-7364

In This Issue:

- **Snakes in Research??**
- **New areas under LAR care**
- **Animal Behavioral Experts on Staff!**
- **LAR Invoicing Has a New Look**
- **Old 9210 N95 Supplies are Dwindling-Get FIT tested ASAP!!**
- **Painter Facility Sock Policy Relaxed**
- **Training Tidbits**

Snakes Can Be Research Animals Too!

LAR welcomed three Green Tree Pythons into our foothills facility this past year! Researchers on campus are delving into the pathogenesis of a python respiratory disease recently proposed to be caused by a nidovirus. A definitive link between disease and the virus is being explored in addition to the development of a green tree python cell line for future in vitro studies. In preparation for their arrival, we diligently researched GT Python care and husbandry, purchased custom built cages, and developed SOPs for handling and feeding the snakes. We have thoroughly enjoyed adding these exotic and beautiful species to our animal care repertoire and hope to see more snake studies in the future!





New Animal Areas Under LAR Care

LAR has been asked to take over care for two new areas on campus recently. Researchers in the MIP department have maintained a pathogen free cat breeding colony in the Pathology building on main campus, as well as two species of deer on foothills campus, for use in their research, and late last year LAR was happy to bring those animals and some of the current staff into our group.

At the start of this year, the PSRL group at the VTH also asked LAR to take over their animal and veterinary care, so we have taken on a whole herd of sheep and goats as well. These new responsibilities have caused a few growing pains, but we are really excited to be caring for so many new animals in support of our amazing faculty researchers here at CSU. This also means that we are in the process of hiring a few more animal care techs and will get to welcome new faces to our group soon!

Animal Behaviorists At Your Service!

Do you have a rat that does not want to participate in blood draws? How about a fractious ferret? Has your guinea pig lost its lust for life? Do you have a beagle who likes to spin in circles for no apparent reason? Does your rabbit like to hide in the back of the rack? Or does your cat just think he is too cool for school? Well, LAR has a solution for that: **Contact a Kate!**

Kate A (soon to be Kate J) and Kate B have revived a long-lost position at LAR-they are the new environmental enrichment coordinators. The Kates work with the students participating in VS495-3, the animal socialization course that is run through the department. This program allows undergraduate students to socialize and train some of the species utilized in research at the university. This semester our species include the dogs, cats, goats, sheep, rabbits, guinea pigs, and rats.

The Kates have also developed an enrichment notebook, which has adapted techniques used by zoos across the country in order to improve the enrichment options available for the animals being used at LAR. The notebook includes a natural life history (how the species behaves in the wild), current enrichment devices, proposed enrichment devices, and reviews of effectiveness of enrichment as noted by the animal care staff. If any LAR users have ideas they would like to implement for their animals, from basic training, to help with study protocols, to new manipulable devices, to anything else you may want to implement, just contact a Kate and we would be more than happy to help get approval for the animals to receive some new enrichment.

Currently, the Kates are analyzing different types of enrichment they would like to implement for the rabbits at LAR, and are looking to start a project involving fresh produce enrichment for the guinea pigs as well. If you would like to find out more about any of the enrichment endeavors that the Kates are developing, please feel free to ask, they would love to talk with you about it!



QUESTIONS, COMMENTS?
Please contact **Jessica Ayers**

We're on the Web!
Check us out:
[LAR homepage](#)

LAR Invoicing Looks Different-Need Help Figuring It Out??

After a few tussles, the February billing was successfully pushed through Kuali and charges posted to your accounts on 3/3/16. These charges will appear on your March financial reports. Please take a few minutes and review the charges to be sure your research expenditures are accurate. Instructions on how you can view the charges in further detail can be found on LAR's website under E-Animal Ordering. If you have questions or changes to request, please send those to our new Help Desk email address at LAR_Animal_Census@mail.colostate.edu
Any and all issues related to eAnimal Ordering can be sent to this link.

Old N95s Running Out, Get FIT Tested ASAP for New 9210 Plus

3M discontinued the 9210 N95 early last year and replaced them with the 9210 Plus model. We are reaching the end of our original 9210 supply and will only be acquiring the 9210 Plus models going forward. If you have not already, please get FIT tested for the 9210 Plus model, as the two models are not interchangeable. You can be fit tested through EHS.

Painter Center Facility Socks No Longer Required in Main Vivarium

Vivarium users are no longer required to change into facility socks when working in the vivarium-the options are to stay in your own socks/shoes and put on shoe covers, or put on facility shoes with the option of keeping your own socks on, or putting on facility socks if you desire. Facility socks are still REQUIRED for BSL3 barrier entries-no outside clothes items should go into the barrier areas.

Training Tidbits *by Denise Ostmeyer*

[AALAS webinars available to all CSU staff](#)

As part of the overall training program for LAR's staff, we have a continuing education session about twice per month. Recently we've viewed several webinars from the American Association for Laboratory Animal Science (AALAS), and some of them may be of interest to researchers as well. If you'd like to view any of the following, contact denise.ostmeyer@colostate.edu for the links.

- Addressing Breeding Problems in Mice
 - Easy Ergonomics Tactics in Small Laboratory Vivariums
 - Compassion Fatigue and Compassion Satisfaction in the Workplace: Is the Cost of Caring Affecting Me?
 - Voice of One: Speaking about Animal Research
- ❖ [Laboratory Liaison Meeting March 25, 2016-Noon, GSB 340](#)